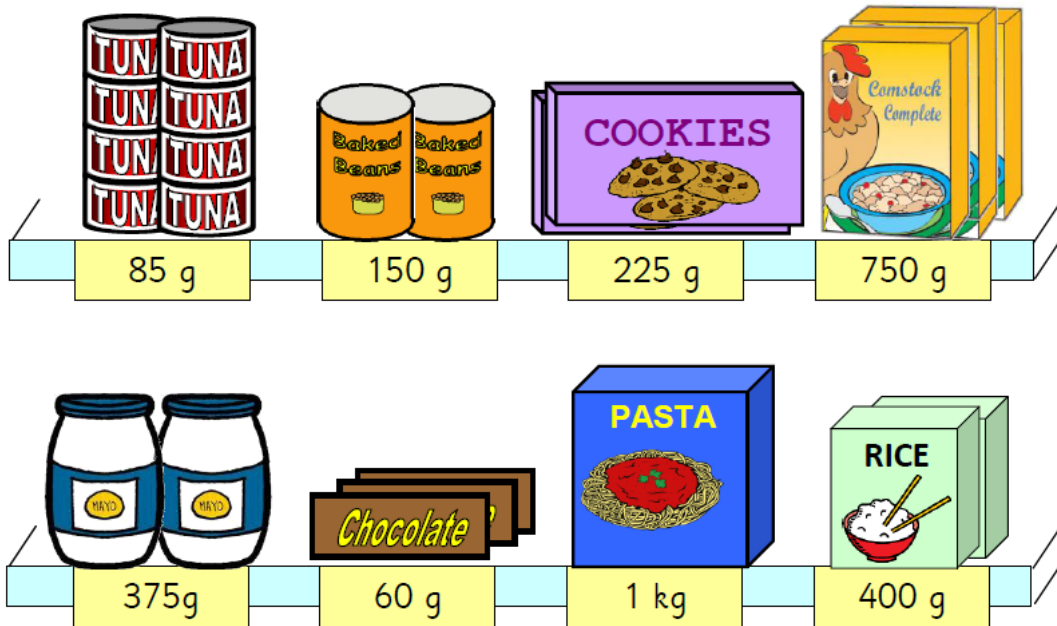


At the Supermarket



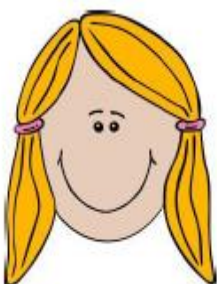
Labels show the mass (weight) of each

Which is the lightest item? chocolate

Which is the heaviest item? pasta

What is the mass of a box of pasta in grams? 1,000 g or one thousand grams.

Maria buys 1 cereal box and 1 box of pasta. What is the mass of the 2 items **altogether**?



1.750 kg or 1kg 750 g

John buys 2 chocolates and 2 packets of rice. What is the total mass of the 4 items?



$$2 \text{ rice} = 400\text{g} + 400\text{g} = 800\text{g}$$

$$2 \text{ chocolates} = 60\text{g} + 60\text{g} = 120\text{g}$$

$$\text{Total weight} = 800\text{g} + 120\text{g} = 920\text{g}$$

Which 3 items have a mass of exactly 1kg altogether?

$$400\text{g} + 375\text{g} + 225\text{g} = 1000\text{g} = 1\text{kg}$$

rice

mayo

cookies

Which 3 items, together have the same mass as a box of cereal?

$$225\text{g} + 375\text{g} + 150\text{g} = 750\text{g}$$

cookies

mayo

Baked beans

When going shopping, Lara always takes the shopping bag with her.

When **empty** the shopping bag has a **mass of 120g**.

From the supermarket, she buys a **packet of pasta**, a **can of baked beans** and a **packet of rice**.

What is the **total mass** that she needs to carry back home?



$$1000\text{g} + 400\text{g} + 150\text{g} = 1550\text{g}$$

$$1550\text{g} + 120\text{g} = 1670\text{g}$$

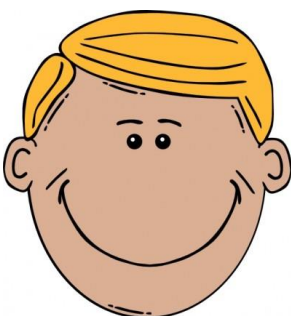
$$\text{Answer} = 1670 \text{ g or } 1.670\text{kg or } 1\text{kg } 670\text{g}$$

Luke prefers to carry his groceries in an empty cardboard box.

He buys **2 cans of tuna**, **1 chocolate**, a **packet of rice** and a **can of baked beans**.

The **total mass** of the box is **1kg**.

What is the **mass** of the **box when empty**?



$$2 \text{ tuna} = 85\text{g} + 85\text{g} = 170\text{g}$$

$$1 \text{ chocolate} = 60\text{g}$$

$$1 \text{ packet of rice} = 400\text{g}$$

$$1 \text{ baked beans} = 150\text{g}$$

$$170\text{g} + 150\text{g} + 400\text{g} + 60\text{g} = 780\text{g}$$

$$1000\text{g} - 780\text{g} = 220\text{g}$$

$$\text{Answer} = 220\text{g}$$